



47 Hertford Road

, Bootle, L20 7DH

Offers over £180,000



Nestled on Hertford Road in the vibrant area of Bootle, this charming end-terrace house presents an excellent opportunity for families and professionals alike. The property boasts three well-proportioned bedrooms, providing ample space for comfortable living. The master bedroom features an ensuite bathroom, ensuring privacy and convenience, while an additional family bathroom caters to the needs of the household.

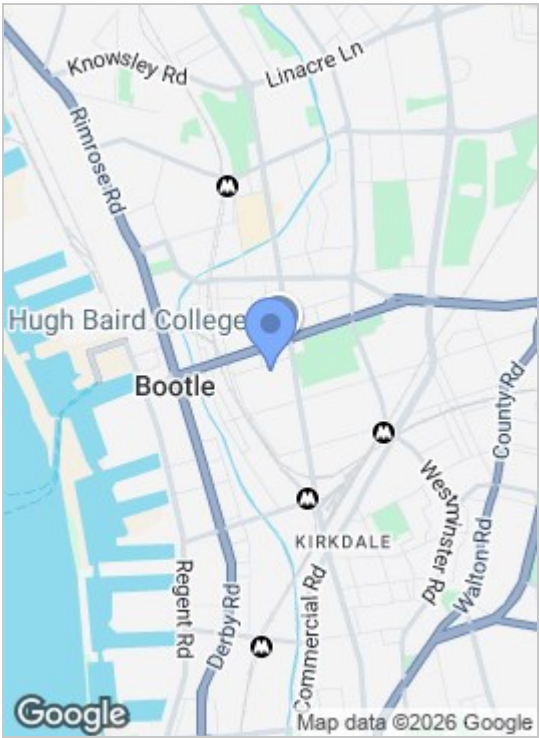
The ground floor comprises a welcoming reception room, perfect for relaxation or entertaining guests. A convenient downstairs w/c adds to the practicality of the layout, making daily routines effortless.

Outside, the property benefits from off-road parking, a valuable asset in this bustling area. The rear garden offers a delightful outdoor space, ideal for enjoying sunny days or hosting gatherings with family and friends.

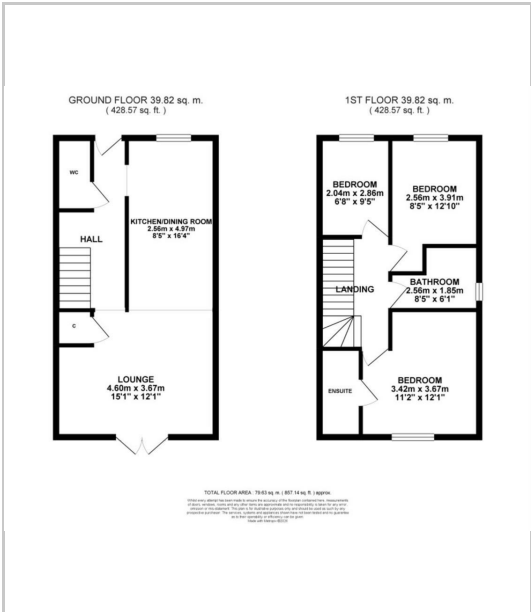
This home combines modern living with a friendly neighbourhood atmosphere, making it a fantastic choice for those seeking a blend of comfort and convenience. With its thoughtful design and desirable features, this property is sure to attract interest. Don't miss the chance to make this lovely house your new home.



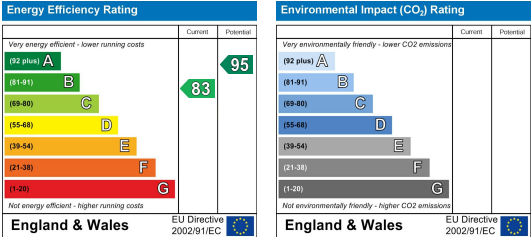
Area Map



Floor Plans



Energy Efficiency Graph



These particulars, whilst believed to be accurate are set out as a general outline only for guidance and do not constitute any part of an offer or contract. Intending purchasers should not rely on them as statements of representation of fact, but must satisfy themselves by inspection or otherwise as to their accuracy. No person in this firms employment has the authority to make or give any representation or warranty in respect of the property.